

# SUB HUB

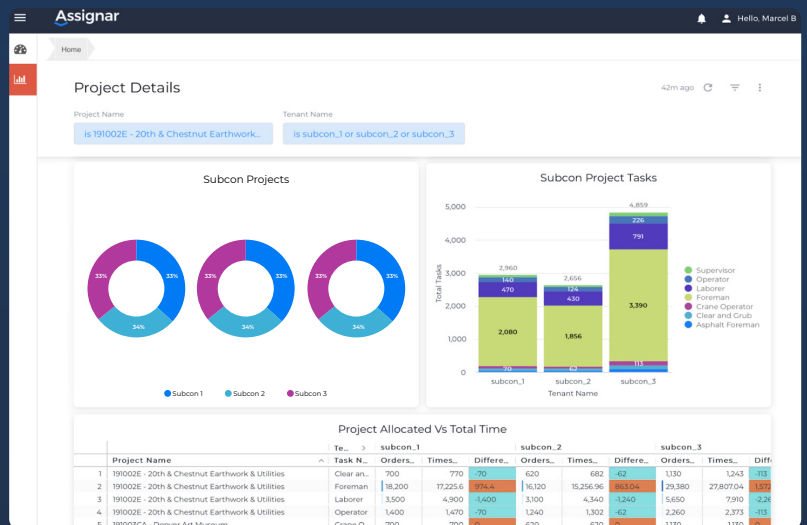
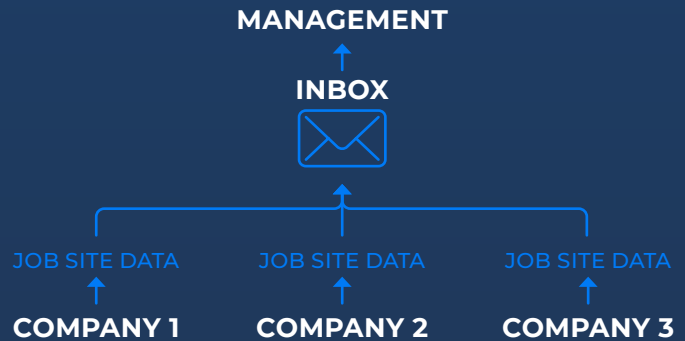
STOP SIFTING THROUGH  
EMAIL ATTACHMENTS TO  
MONITOR PROJECTS

## WHAT'S THE PROBLEM?

After a contractor is awarded a job, it's difficult for GCs or Owners to track what happens next.

Mostly, there is **no visibility** into:

- Readiness for scheduled work
- Status of ongoing jobs (hours and units completed)
- Actual status versus planned progress
- Compliance with safety and wage regulations
- Post completion work



## WHAT IF YOU COULD GET THE RESULTS OF...

- Agreed Upon Daily Site Reports
- Timesheets
- Safety Checklists
- Work Completed Reports
- Required Forms

...DAILY AND ACROSS  
COMPANIES?

## HOW DOES ASSIGNAR HELP?

Sub Hub pulls together data that Subs/ Group Companies submit through Assignar. The result is **near real-time visibility** into what happened on the job sites they're responsible for.



**Contractors Not Ready to Roll Out Assignar?** Submit digital forms via cell phone or tablet, and the data still aggregates into the portal.